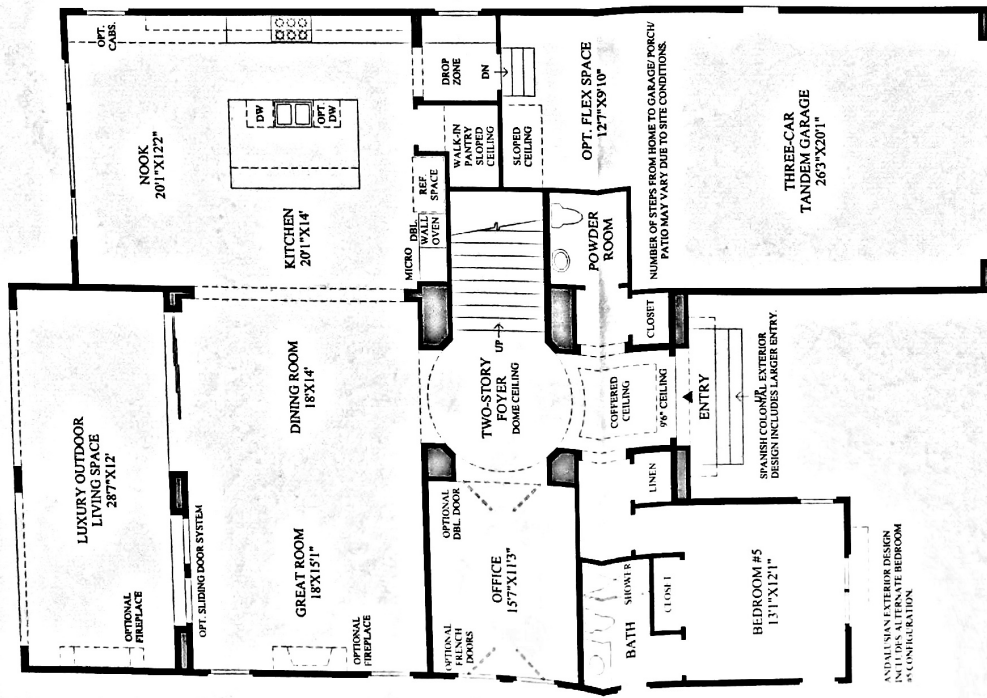
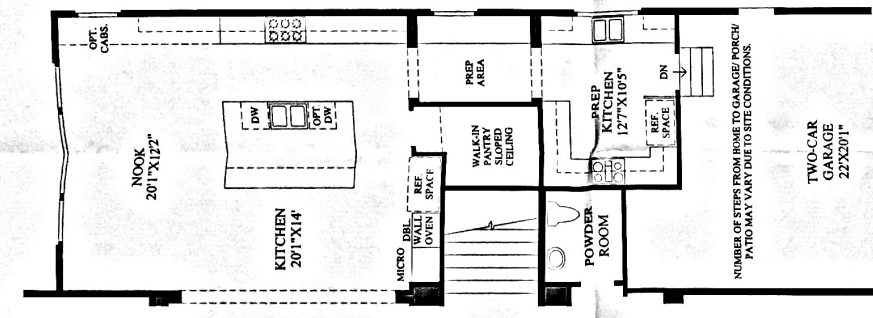


DRAFT



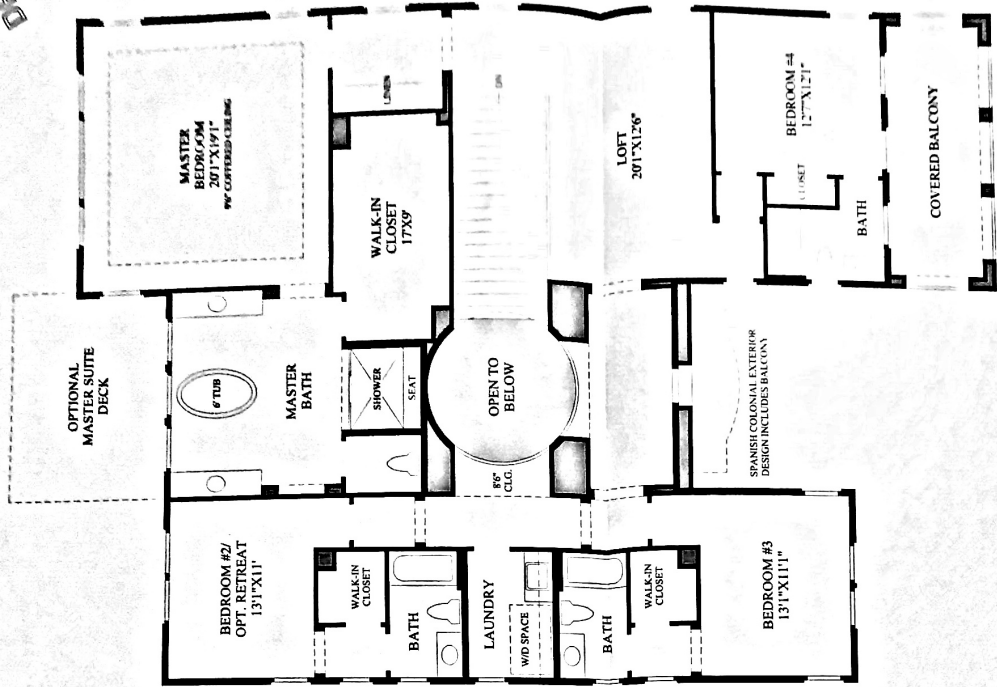
SHOWN WITH OPTIONAL PREP KITCHEN

First Floor
TUSCAN EXTERIOR DESIGN SHOWN



SHOWN WITH OPTIONAL PREP KITCHEN

Second Floor



THE CHESTERHILL HIGHLIGHTS

- A charming foyer featuring coffered and domed ceilings leads you into this exquisite home.
- This enormous great room features a sliding door system to the luxury outdoor living space beyond.
- The well-appointed kitchen includes ample counter space, a large island with an informal breakfast bar, and a walk-in pantry.
- Relax in the master bedroom, which boasts a coffered ceiling, a large walk-in closet, and a luxurious master bath complete with a 6' free-standing tub, a separate shower with a seat, and dual vanities.
- Additional features include a bedroom-level laundry room, a private bath for each secondary bedroom, a convenient office, and a private covered balcony.

DRAFT