

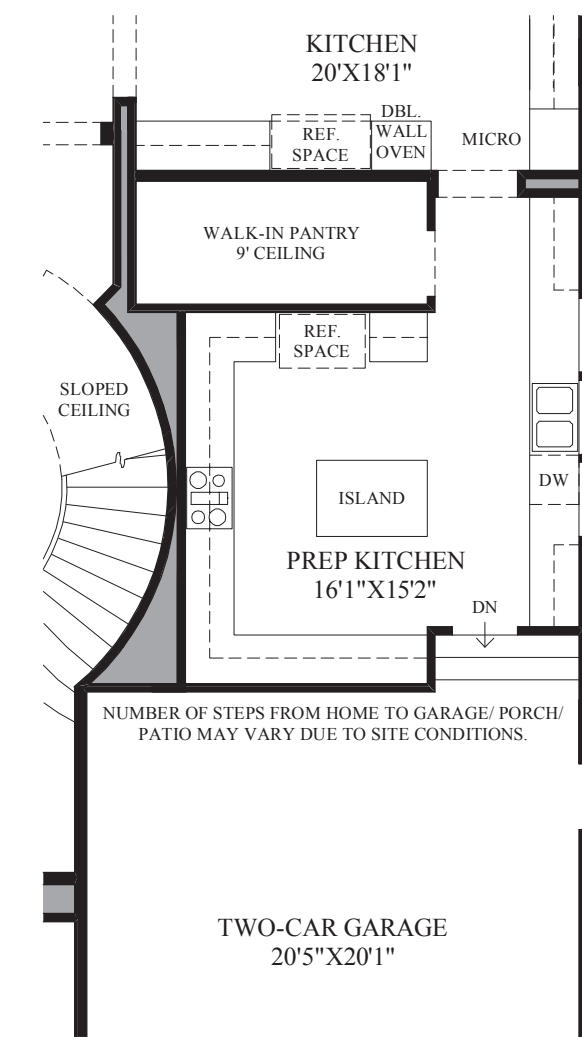
THE SEELEY HIGHLIGHTS

- The dual curved staircases help create a stunning foyer, which is sure to impress as it reaches a soaring double-volume height that offers a clear line of sight to the wall of sliding glass doors beyond.
- The exquisite formal dining room is enhanced by an elegant two-story ceiling and features an expansive sliding glass door system that leads to the sizable luxury outdoor living space.
- Overlooking the dining and great rooms, the stylish kitchen has much to offer for the at home chef, including a large center island, ample counter space, a walk-in pantry, and an adjoining nook.
- Completing the luxurious master bedroom suite is a secluded retreat, coffered ceilings, two walk-in closets, and a marvelous master bath that includes a soaking tub, as well as a large shower with a seat.
- Additional highlights include an appealing first-floor bedroom, a versatile office space, private baths for each of the secondary bedrooms, and a generous upper-level bonus room.

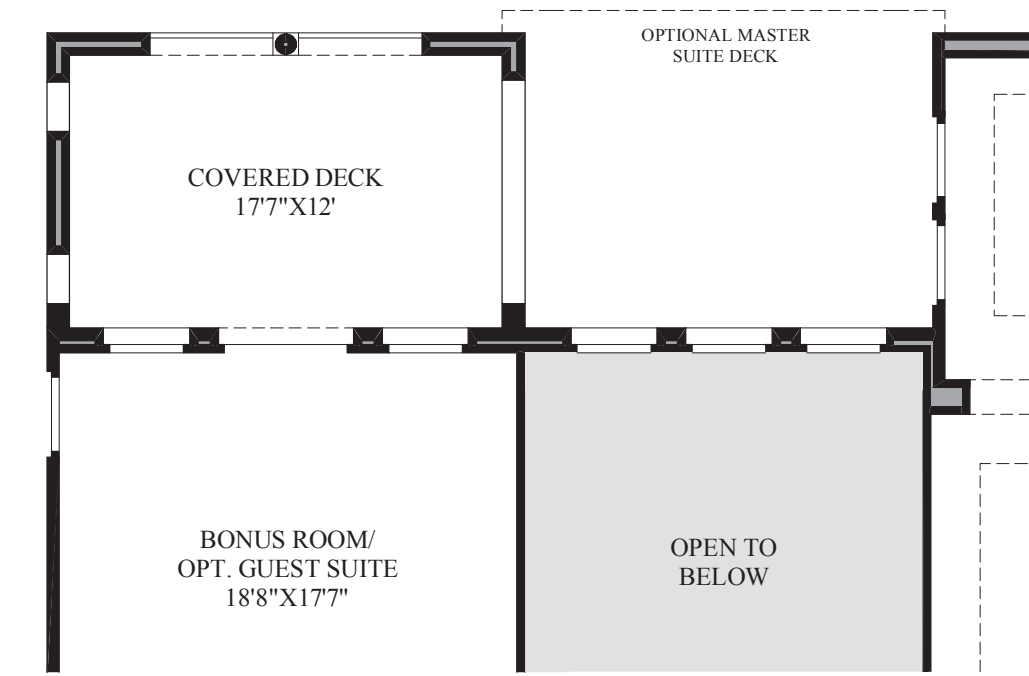


SHOWN WITH OPTIONAL PARENT(S) SUITE ADDITION

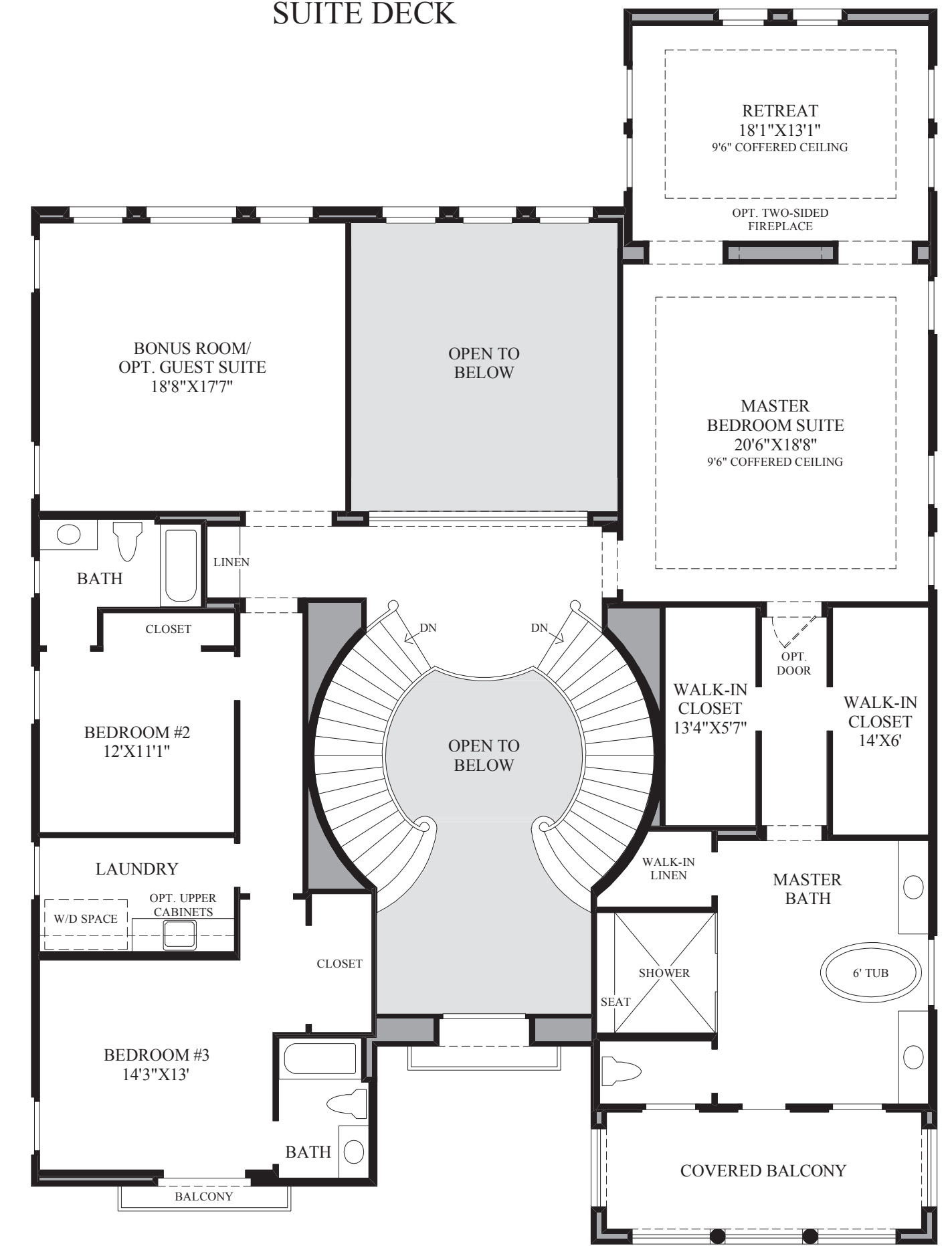
First Floor
TUSCAN EXTERIOR DESIGN SHOWN



SHOWN WITH OPTIONAL PREP KITCHEN



SHOWN WITH OPTIONAL REAR DECK / MASTER SUITE DECK



COVERED BALCONY ONLY AVAILABLE WITH TUSCAN AND ANDALUSIAN EXTERIOR DESIGNS.

Second Floor