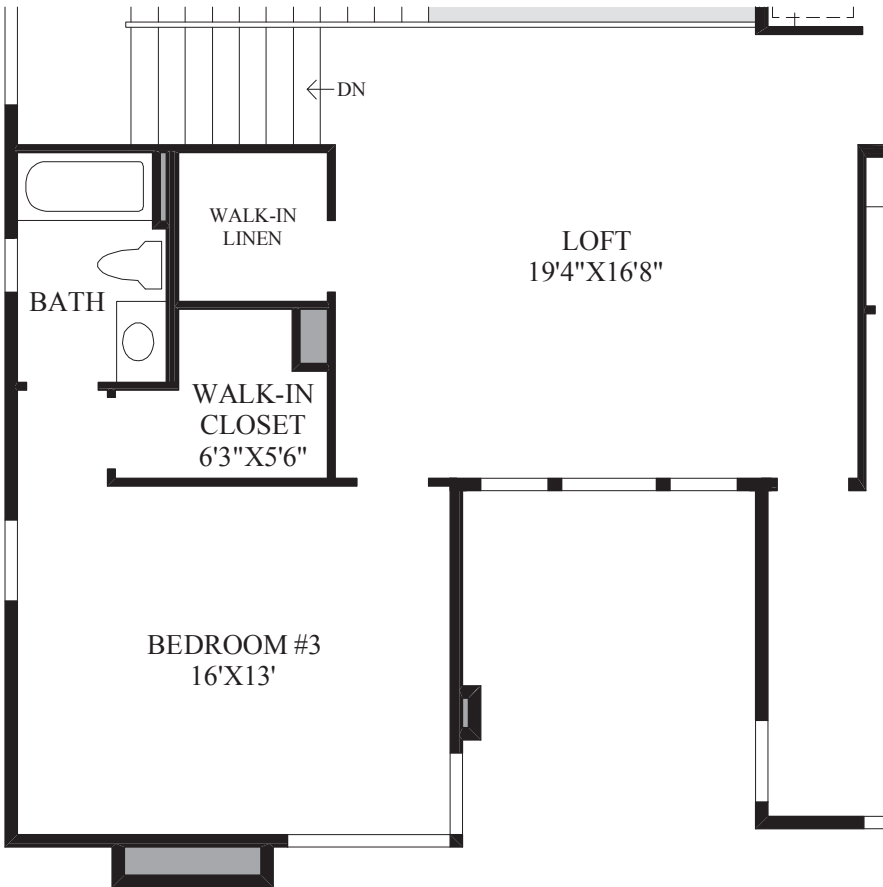


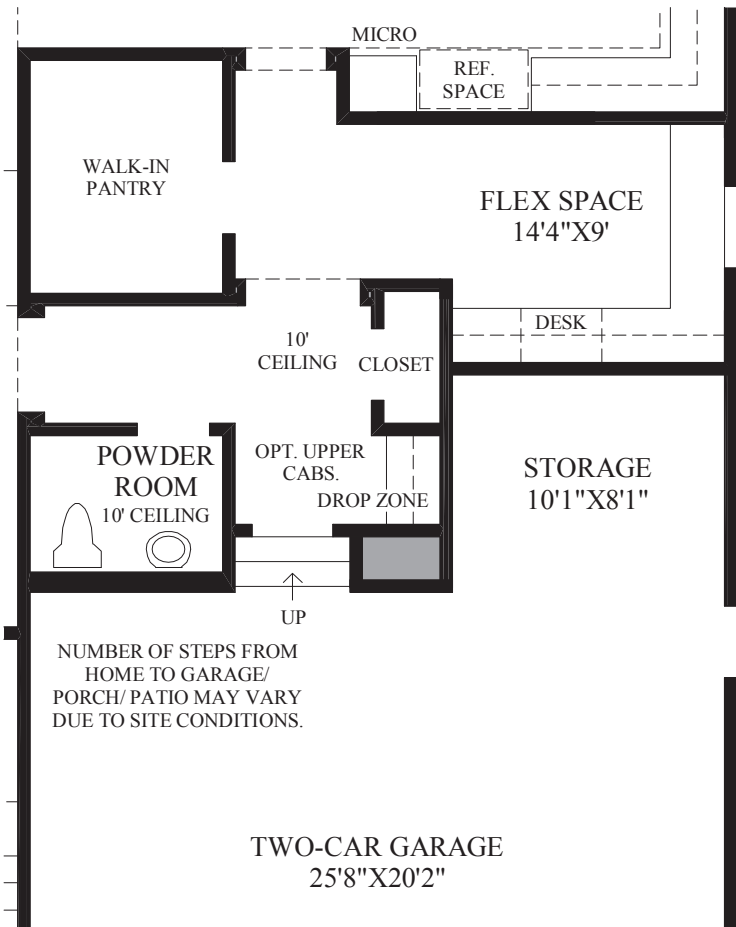
First Floor
MODERN EXTERIOR DESIGN SHOWN



Second Floor



SHOWN WITH OPTIONAL LOFT



SHOWN WITH OPTIONAL FLEX SPACE LEVEL 2

THE ELARA HIGHLIGHTS

- An eye-catching covered entry leads into the foyer which boasts an impressive double volume ceiling and opens to the desirable office.
- Entertain guests with ease in the enormous great room which features a striking array of windows and an open-concept design that offers views to both the dining room and kitchen.
- The superb kitchen is well-equipped with a center island that includes a breakfast bar, a walk-in pantry, a useful prep area, plenty of counter space, and a sliding door system accessing the fantastic luxury outdoor living space.
- Providing the ultimate retreat is the spacious master bedroom which includes a luxurious master bath complete with dual vanities, a shower flanked by drying areas, a 6' tub, and a sizeable walk-in closet.
- Additionally, this fantastic home includes a convenient laundry room, an abundance of linen space, and generous secondary bedrooms each with their own private bath.