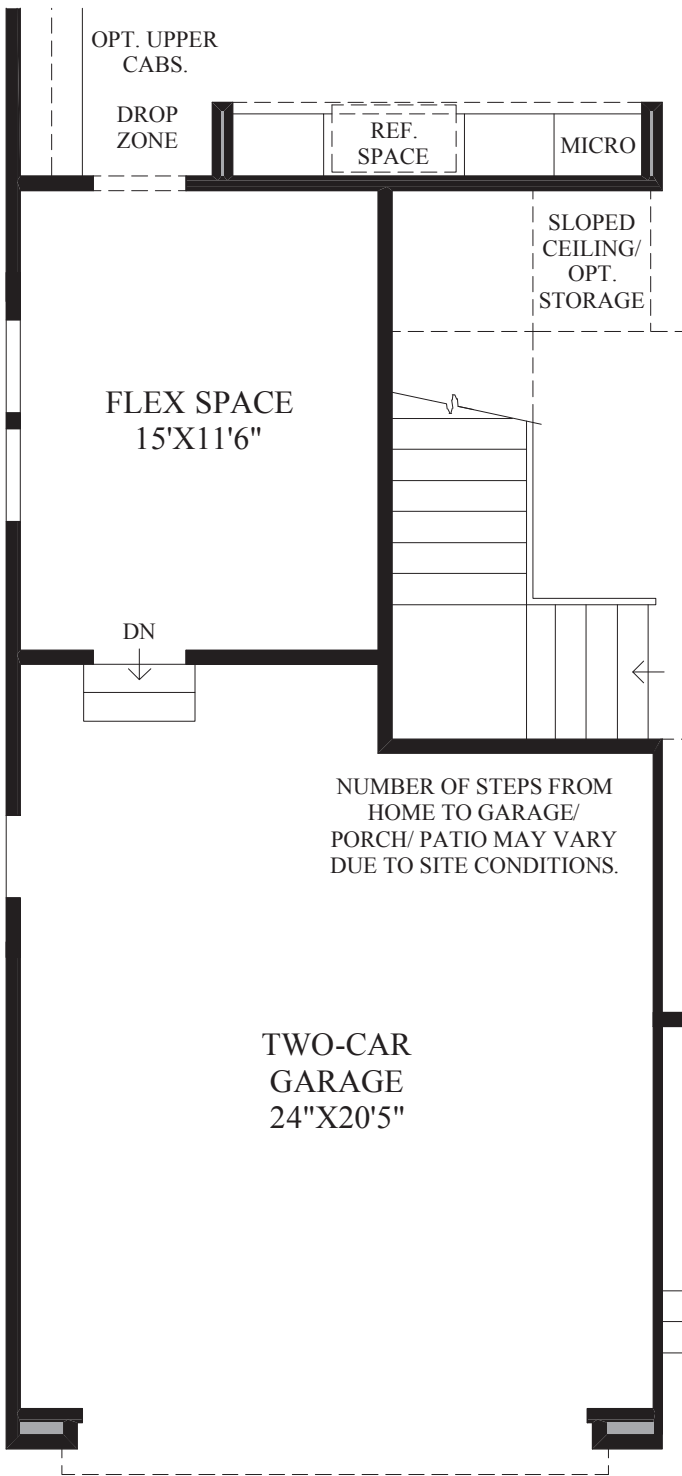
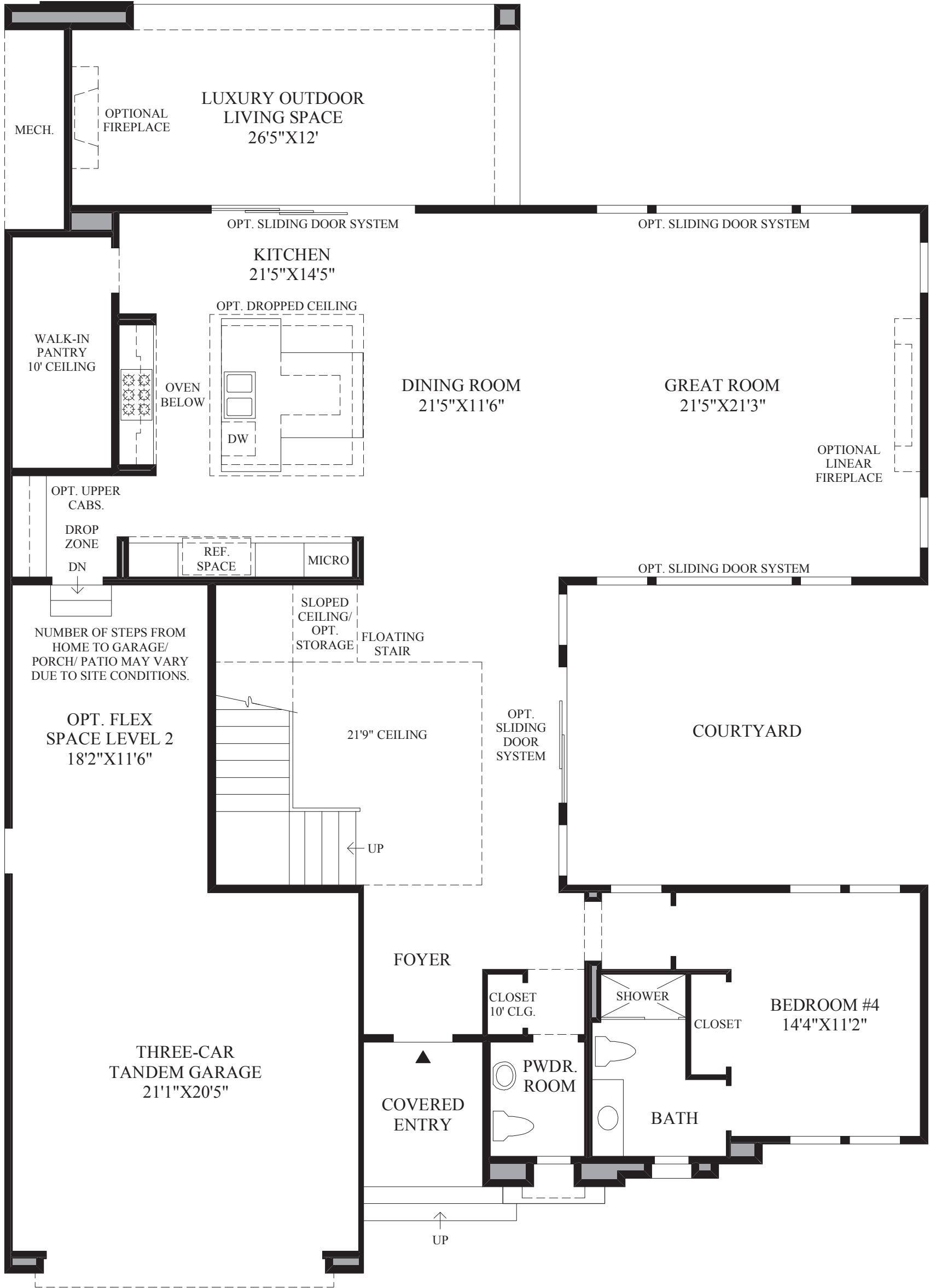


THE CRESSIDA HIGHLIGHTS

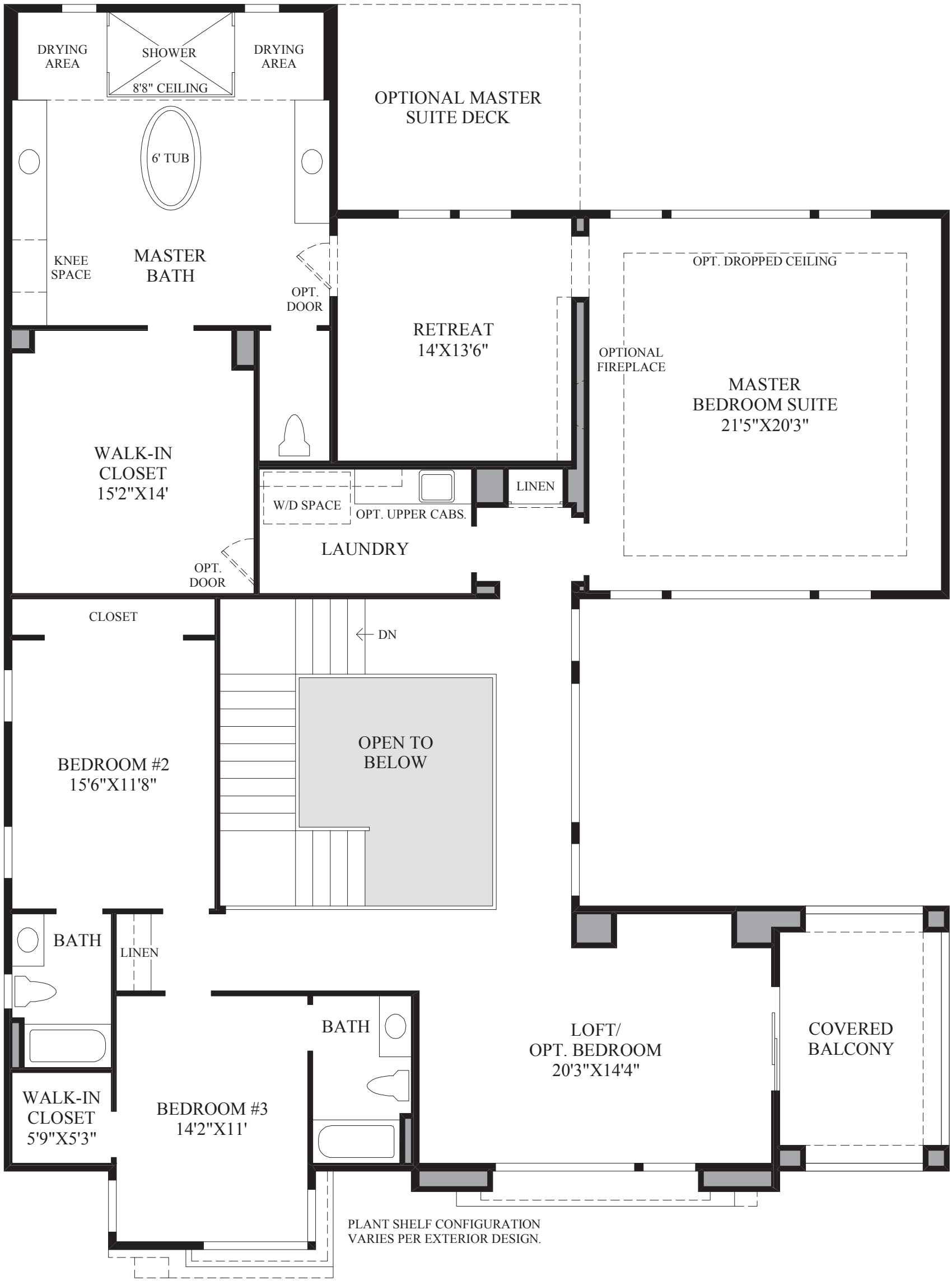
- Passing through the covered entry, the charming foyer opens up to an impressive double volume space that presents desirable viewing windows and flaunts a stunning staircase.
- Perfect for entertaining, the enormous great room opens to the kitchen and dining room, with views of the courtyard.
- Easily prepare any meal from the elegant kitchen that boasts a large walk-in pantry, ample counter space, and a huge center island with a wraparound breakfast bar that is great for informal dining.
- This superior master bedroom suite is complemented by a sublime retreat and a spa-like master bath that is complete with a massive walk-in closet, a free-standing tub, an impressive glass-enclosed shower, as well as dual vanities.
- Also included with this fantastic home is a relaxing luxury outdoor living space to enjoy outdoor living from, generous secondary bedrooms each complete with a full bath, a desirable first-floor bedroom, and a grand loft that allows access to an extraordinary covered balcony.



SHOWN WITH OPTIONAL
FLEX SPACE LEVEL 1



First Floor
MODERN EXTERIOR DESIGN SHOWN



Second Floor