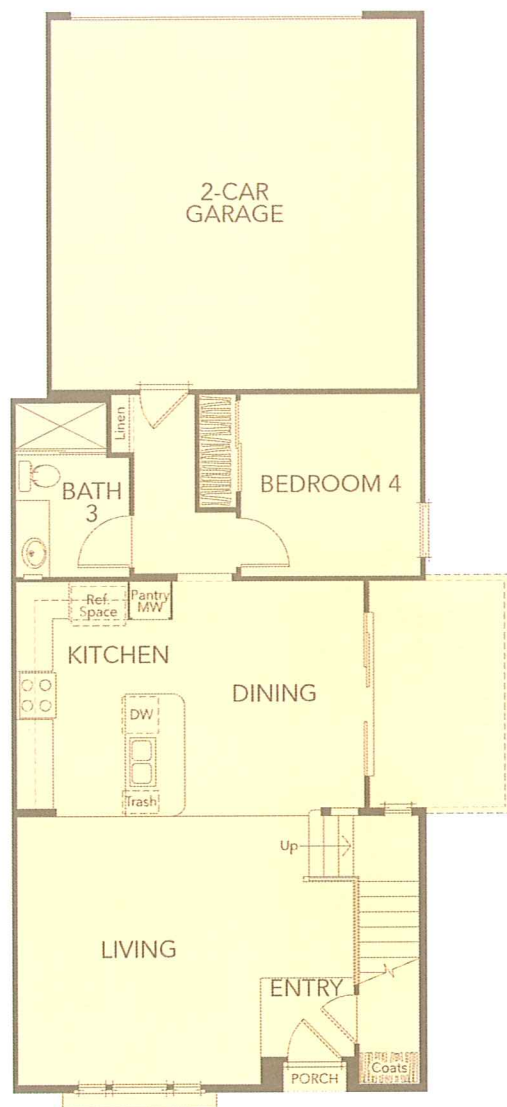
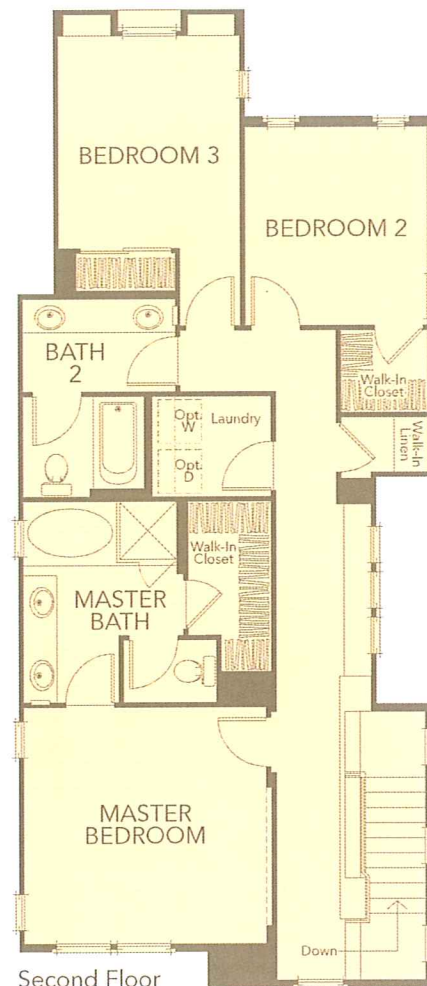


residence 3



First Floor



Second Floor

1,805 Square Feet

4 Bedrooms

3 Baths



Porter Ranch Development Company, a joint venture of Shapell Homes and Liberty Building Company. Dates are tentative and subject to change. Prices, terms and availability subject to change without notice. Square footages are approximate. All illustrations are artist's concept only, are not to scale and are subject to change in actual production. ©2013 Shapell Homes. California BRE Broker, License No. 527718.

