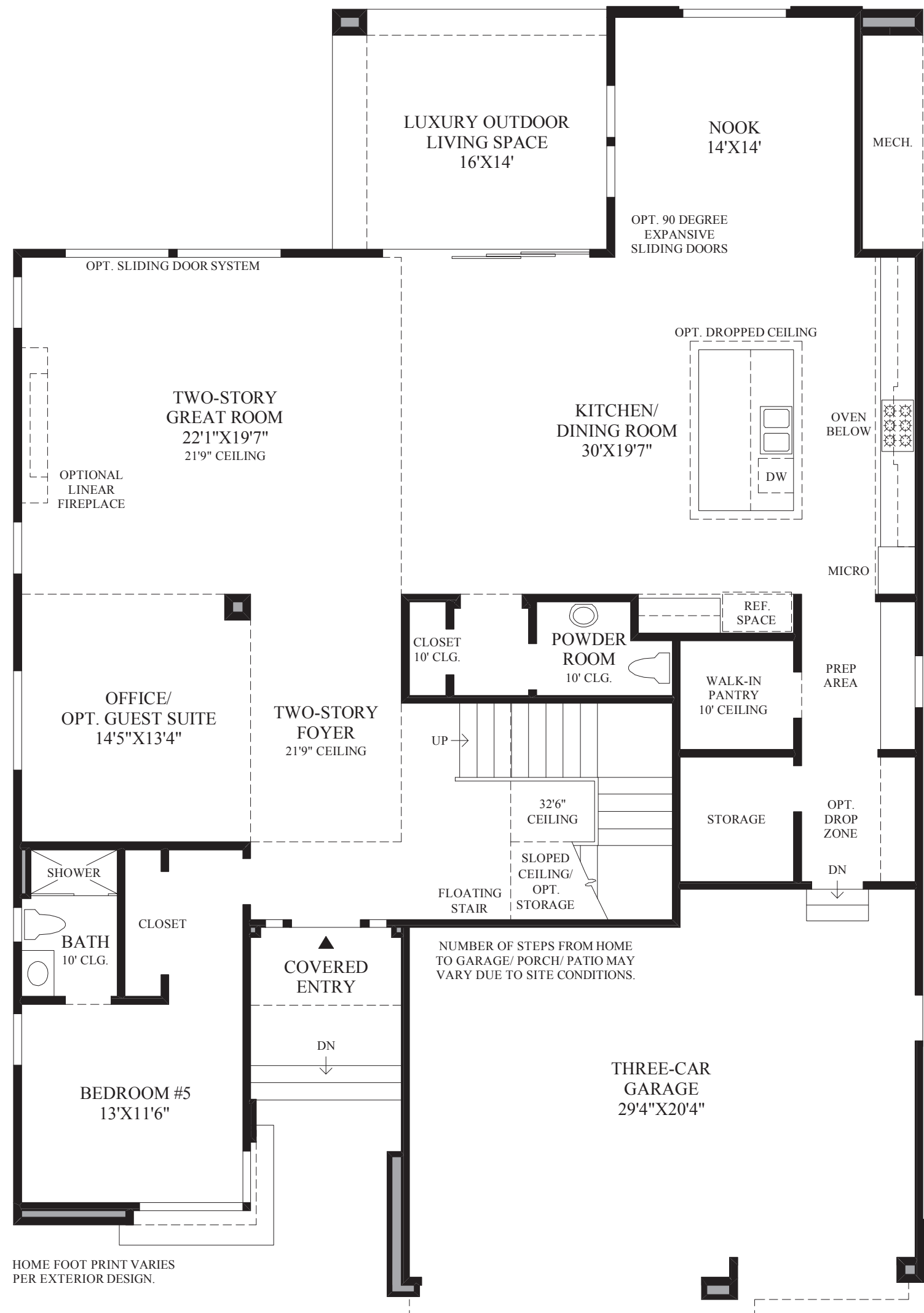


DRAFT



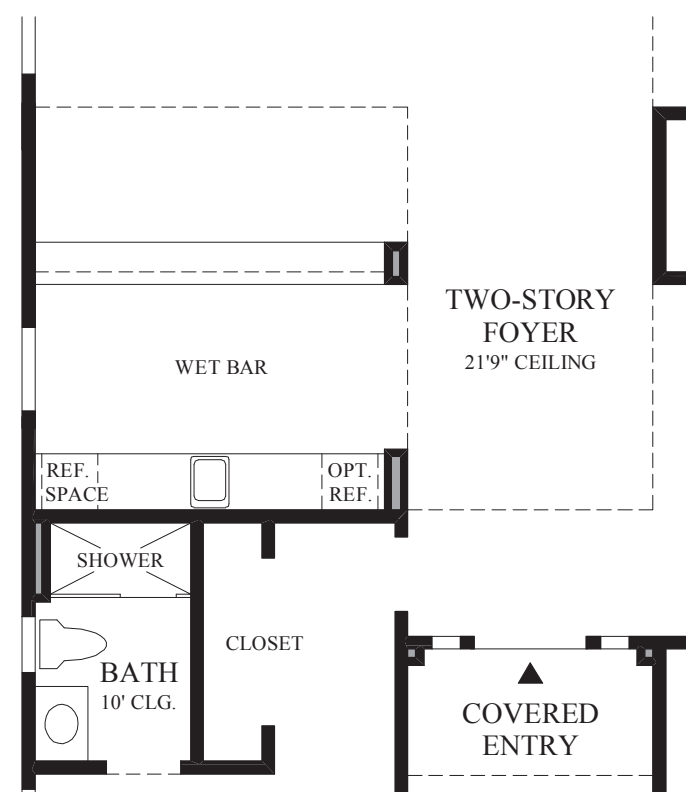
**First Floor**

MODERN EXTERIOR DESIGN SHOWN

HOME FOOT PRINT VARIES PER EXTERIOR DESIGN.



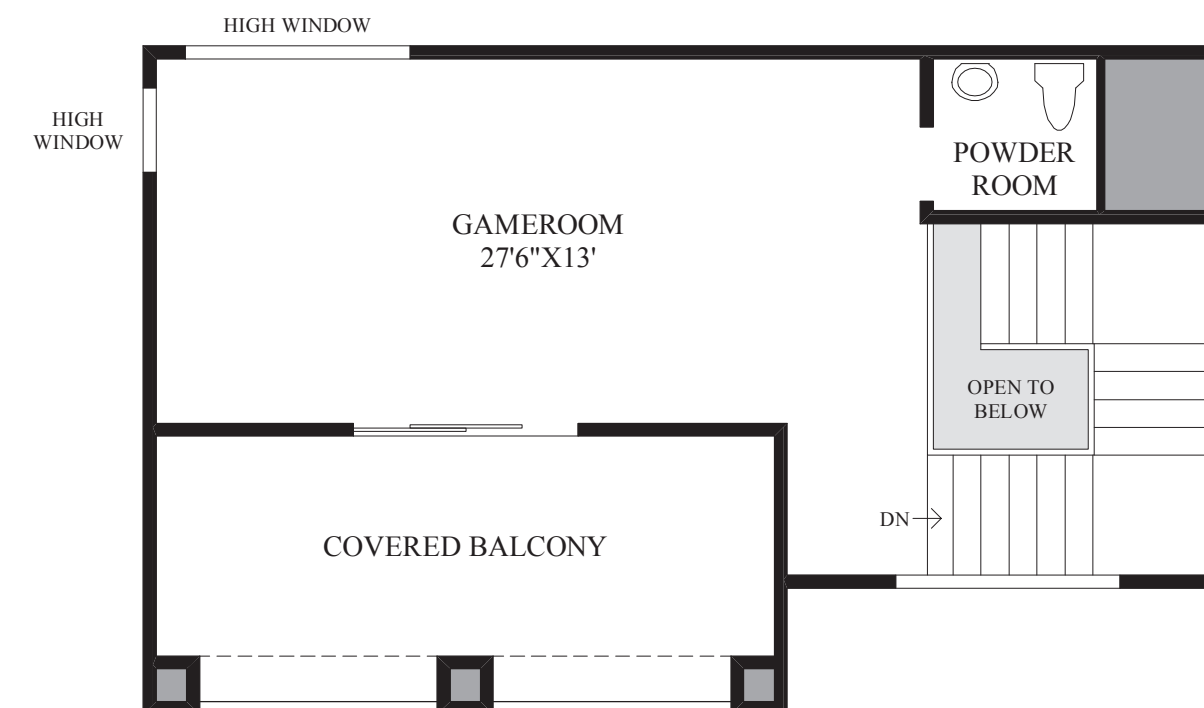
**Second Floor**



SHOWN WITH OPTIONAL WET BAR

**THE CASTOR ELITE HIGHLIGHTS**

- This striking two-story foyer showcases a magnificent staircase and a grand office after arriving through the welcoming covered entry.
- In connection with the wonderful two-story great room and regal dining room, the superb kitchen boasts a huge center island, a large walk-in pantry, and an adjoining nook perfect for informal dining.
- A flawless master bedroom suite flaunts an appealing sitting area and a glorious master bath that comes complete with a free-standing tub, dual vanities, a sizable walk-in closet, and a spacious shower with a drying area.
- Additional features include a splendid loft, a first-floor bedroom that is excellent for visiting guests, and a captivating third-floor gameroom with access to an impressive covered balcony.



**Third Floor**

DRAFT